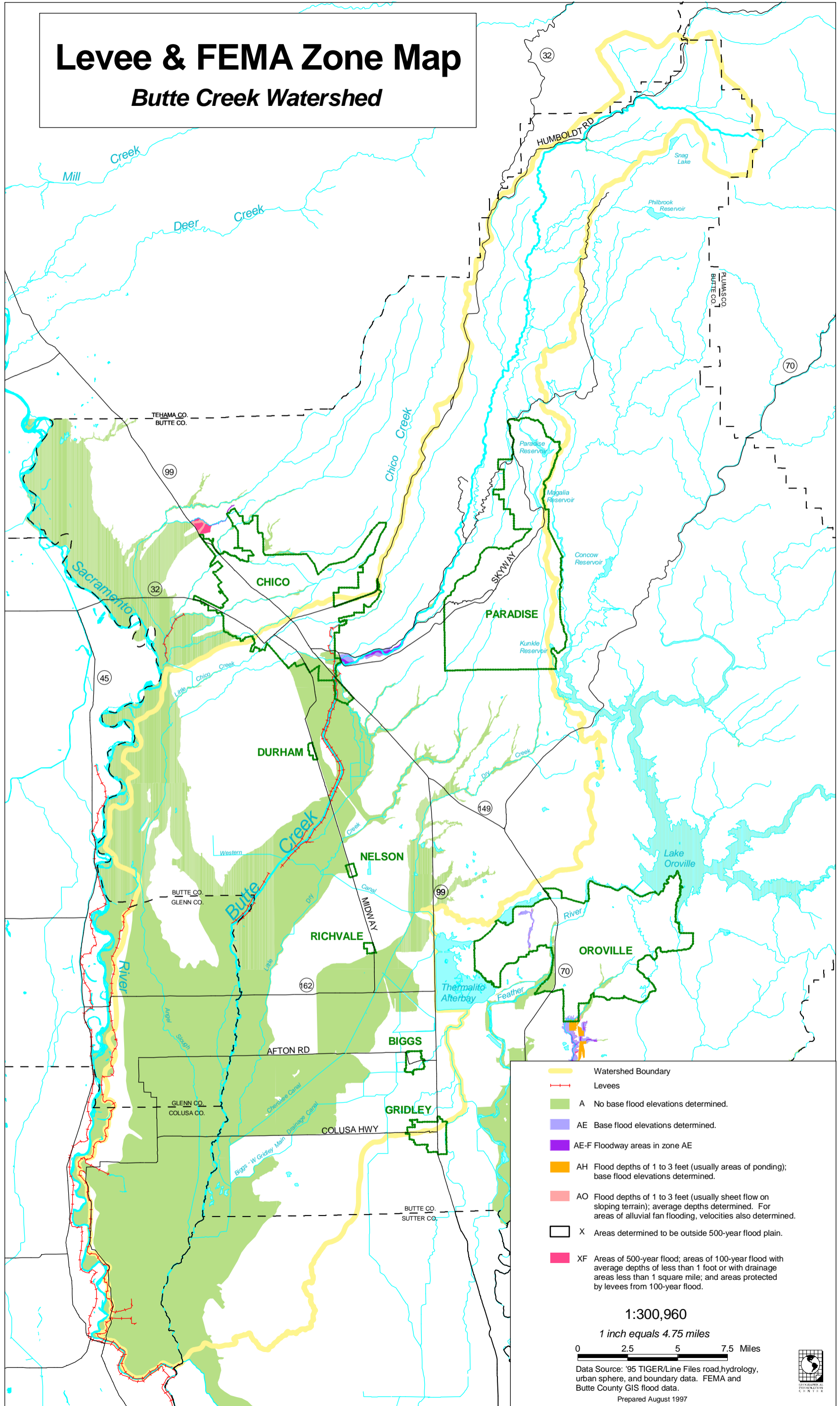


Levee & FEMA Zone Map

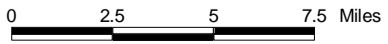
Butte Creek Watershed



- Watershed Boundary
- Levees
- A No base flood elevations determined.
- AE Base flood elevations determined.
- AE-F Floodway areas in zone AE
- AH Flood depths of 1 to 3 feet (usually areas of ponding); base flood elevations determined.
- AO Flood depths of 1 to 3 feet (usually sheet flow on sloping terrain); average depths determined. For areas of alluvial fan flooding, velocities also determined.
- X Areas determined to be outside 500-year flood plain.
- XF Areas of 500-year flood; areas of 100-year flood with average depths of less than 1 foot or with drainage areas less than 1 square mile; and areas protected by levees from 100-year flood.

1:300,960

1 inch equals 4.75 miles



Data Source: '95 TIGER/Line Files road, hydrology, urban sphere, and boundary data. FEMA and Butte County GIS flood data.

Prepared August 1997

