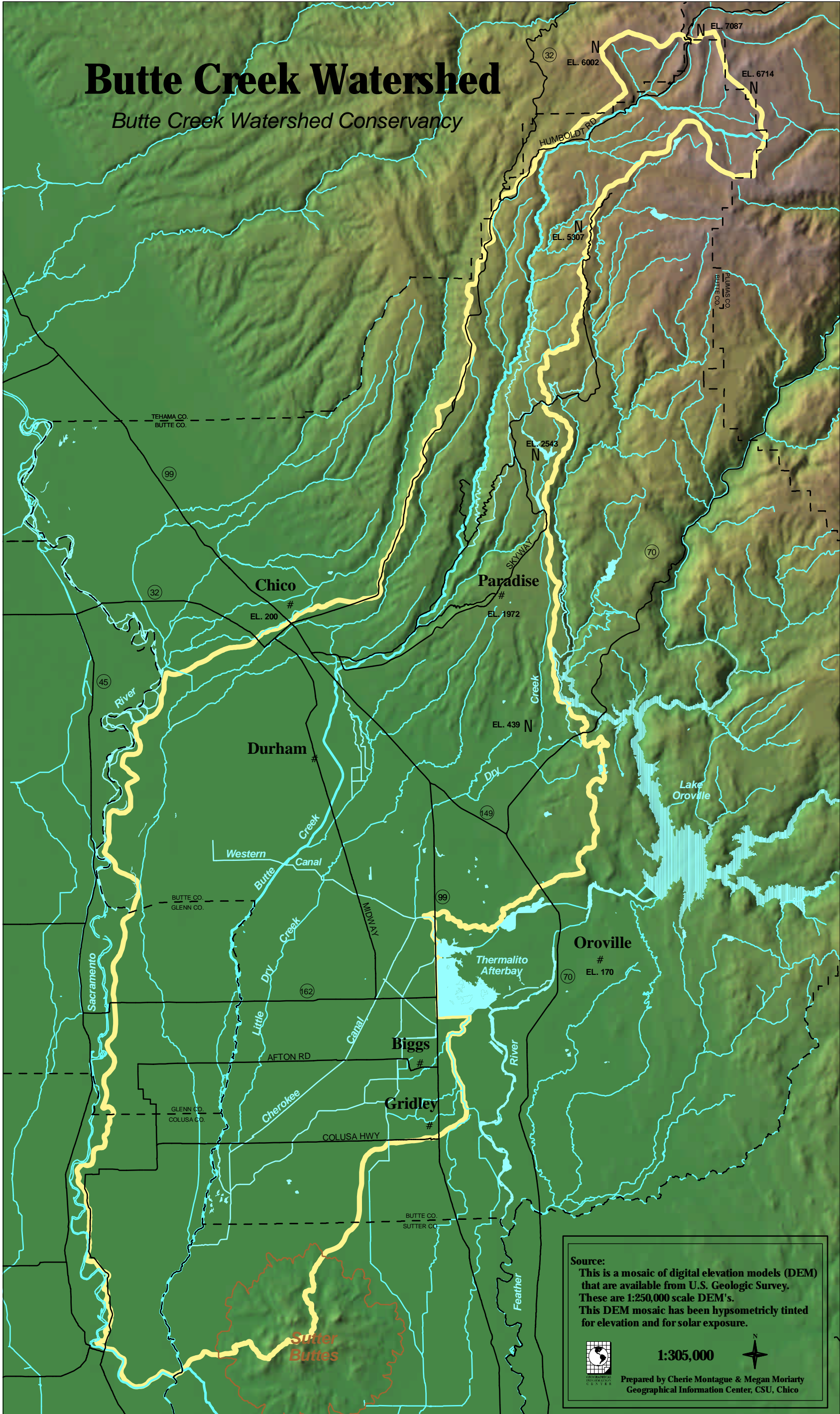


Butte Creek Watershed Project
Draft Existing Conditions Report
Map Appendix
August 1998

Butte Creek Watershed

Butte Creek Watershed Conservancy



Source:
This is a mosaic of digital elevation models (DEM) that are available from U.S. Geologic Survey. These are 1:250,000 scale DEM's. This DEM mosaic has been hypsometrically tinted for elevation and for solar exposure.

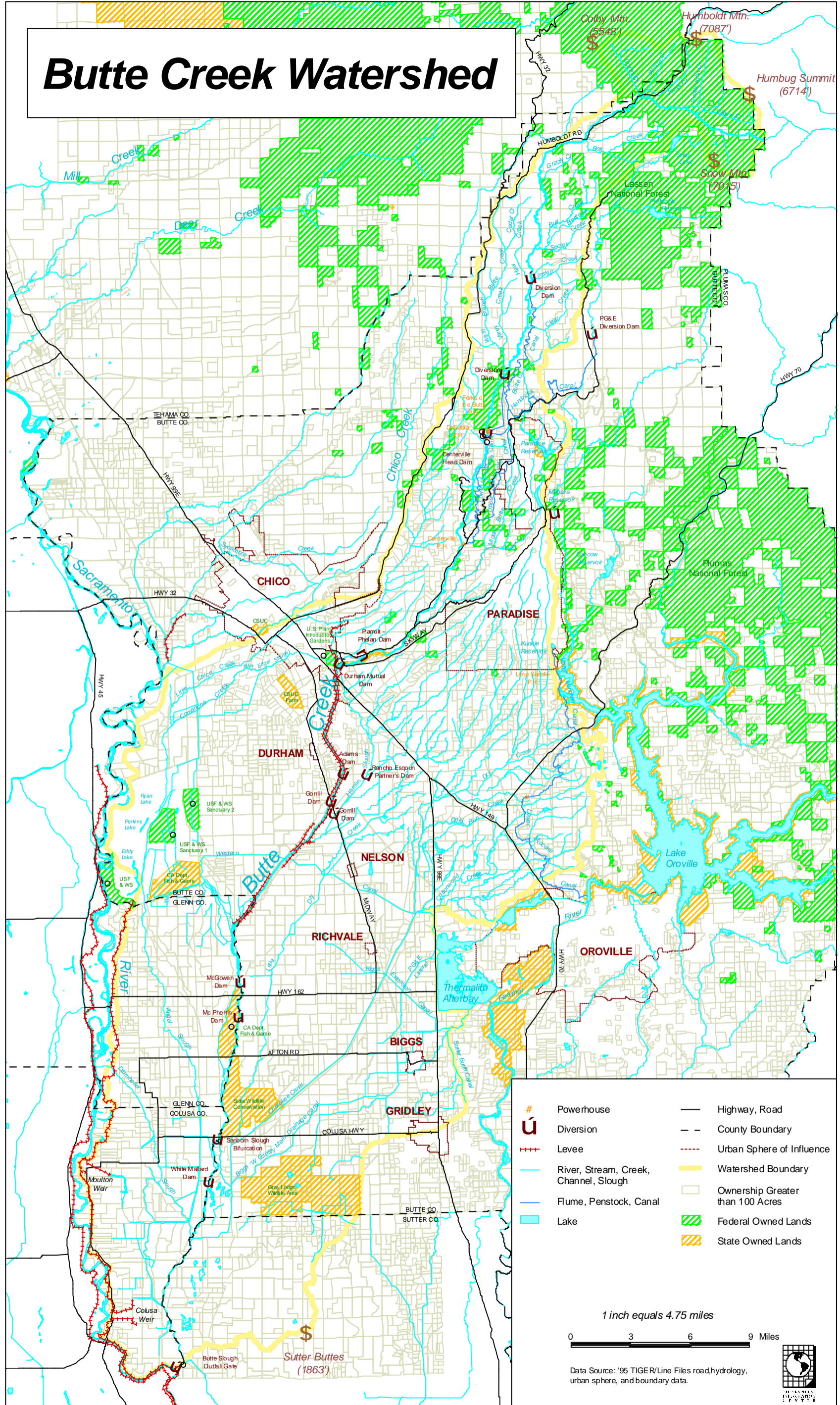


1:305,000



Prepared by Cherie Montague & Megan Moriarty
Geographical Information Center, CSU, Chico

Butte Creek Watershed



- | | | | |
|-----|---------------------------------------|-------|----------------------------------|
| # | Powerhouse | — | Highway, Road |
| U | Diversion | - - | County Boundary |
| +++ | Levee | - - - | Urban Sphere of Influence |
| — | River, Stream, Creek, Channel, Slough | — | Watershed Boundary |
| — | Flume, Penstock, Canal | □ | Ownership Greater than 100 Acres |
| □ | Lake | ▨ | Federal Owned Lands |
| | | ▨ | State Owned Lands |

1 inch equals 4.75 miles

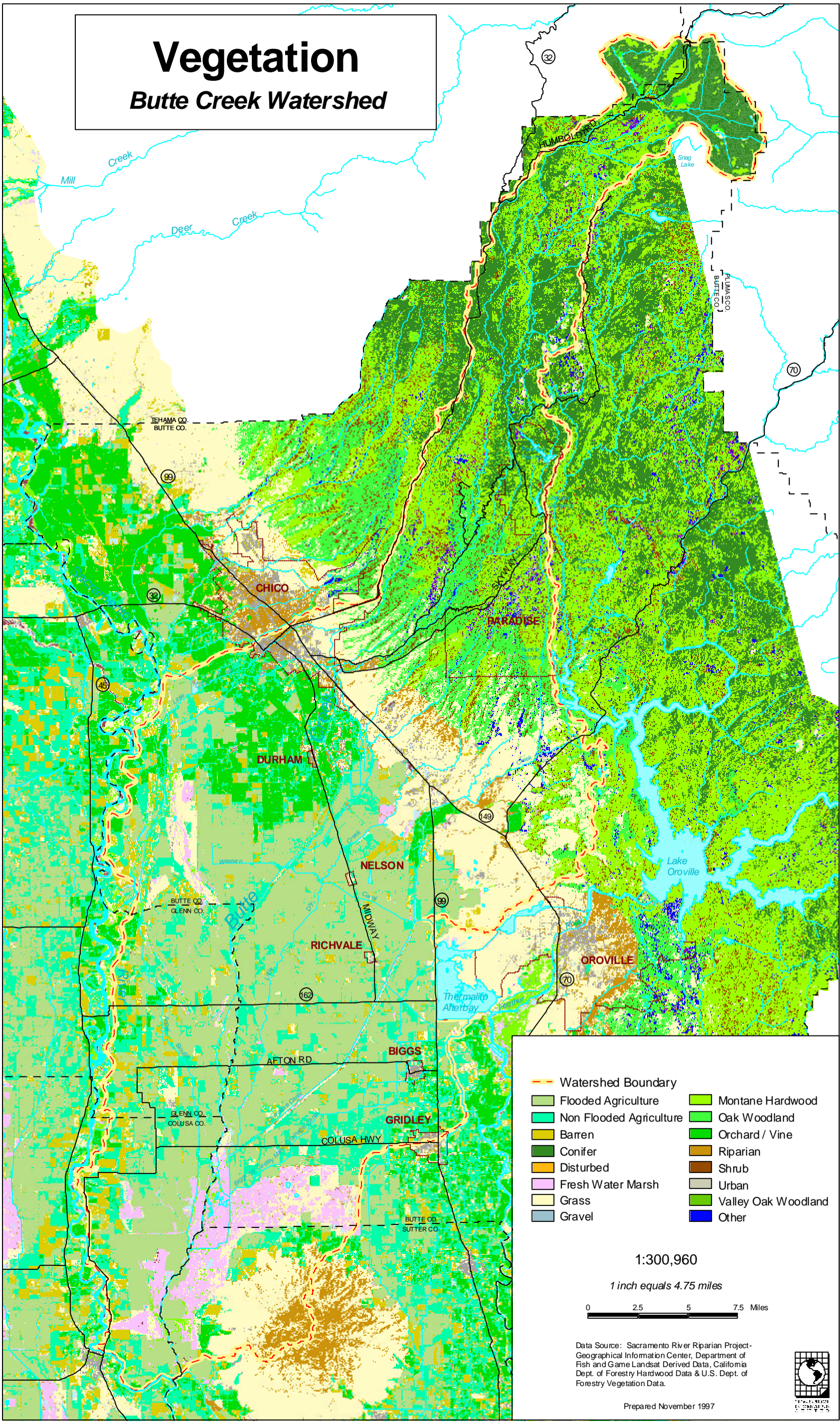


Data Source: '95 TIGER/Line Files road, hydrology, urban sphere, and boundary data.



Vegetation

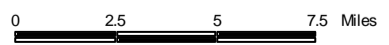
Butte Creek Watershed



- Watershed Boundary
- Flooded Agriculture
- Non Flooded Agriculture
- Barren
- Conifer
- Disturbed
- Fresh Water Marsh
- Grass
- Gravel
- Montane Hardwood
- Oak Woodland
- Orchard / Vine
- Riparian
- Shrub
- Urban
- Valley Oak Woodland
- Other

1:300,960

1 inch equals 4.75 miles



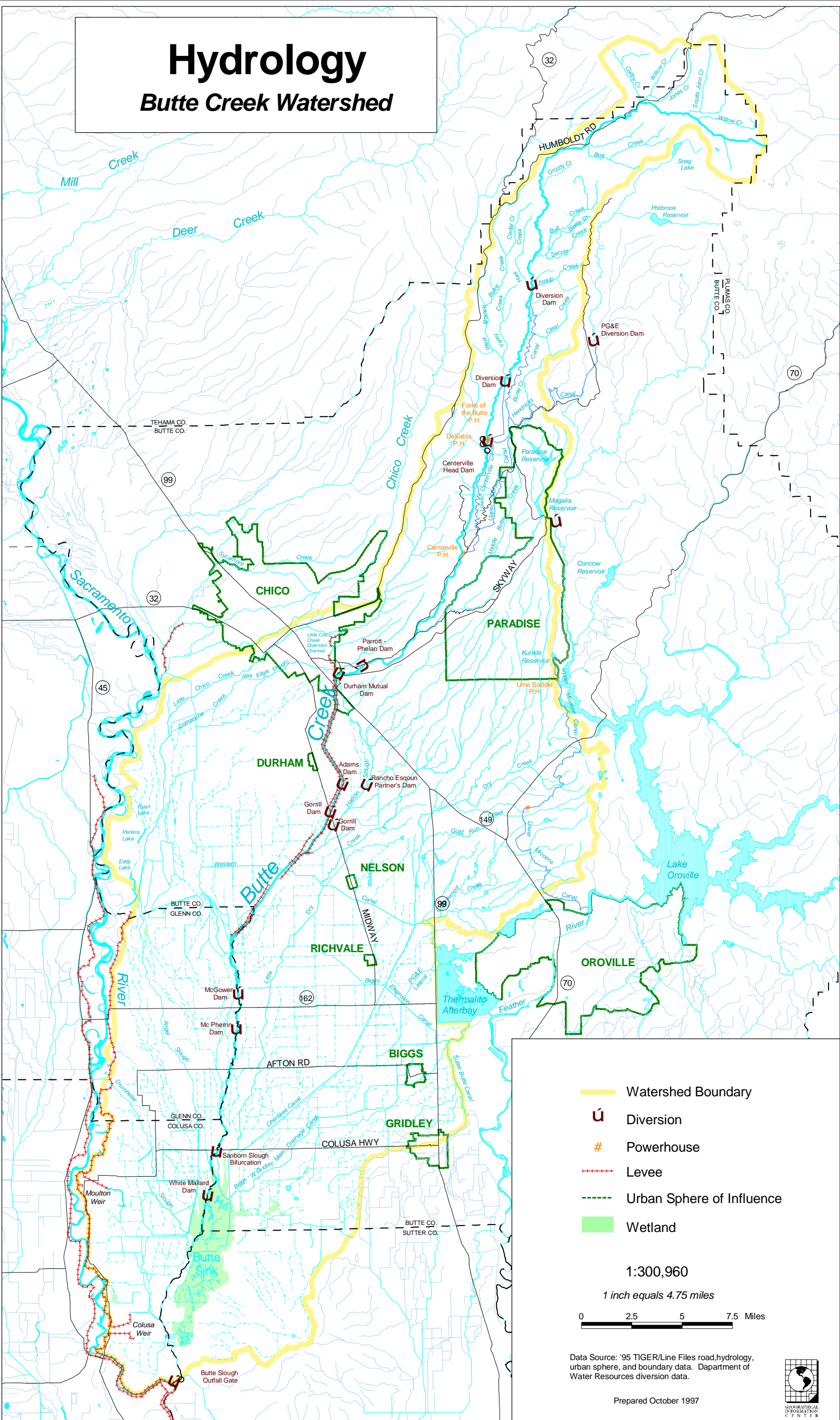
Data Source: Sacramento River Riparian Project-
Geographical Information Center, Department of
Fish and Game Landsat Derived Data, California
Dept. of Forestry Hardwood Data & U.S. Dept. of
Forestry Vegetation Data.

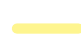


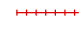

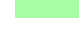
Prepared November 1997



Hydrology

Butte Creek Watershed



-  Watershed Boundary
-  Diversion
-  Powerhouse
-  Levee
-  Urban Sphere of Influence
-  Wetland

1:300,960
 1 inch equals 4.75 miles
 0 2.5 5 7.5 Miles

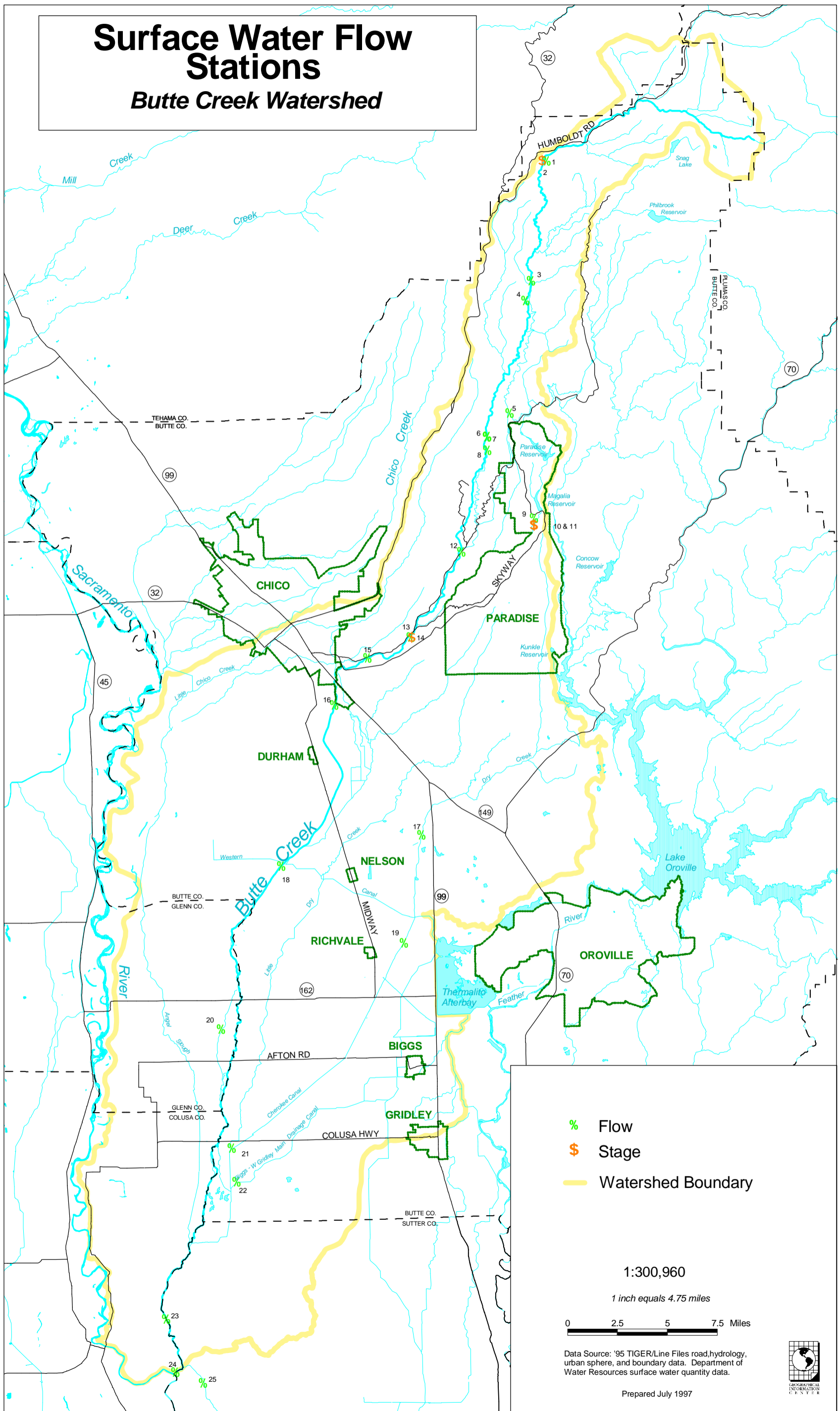
Data Source: '95 TIGER/Line Files road, hydrology, urban sphere, and boundary data. Department of Water Resources diversion data.

Prepared October 1997



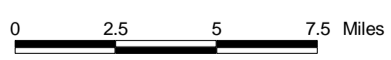
Surface Water Flow Stations

Butte Creek Watershed



- % Flow
- \$ Stage
- Watershed Boundary

1:300,960
1 inch equals 4.75 miles



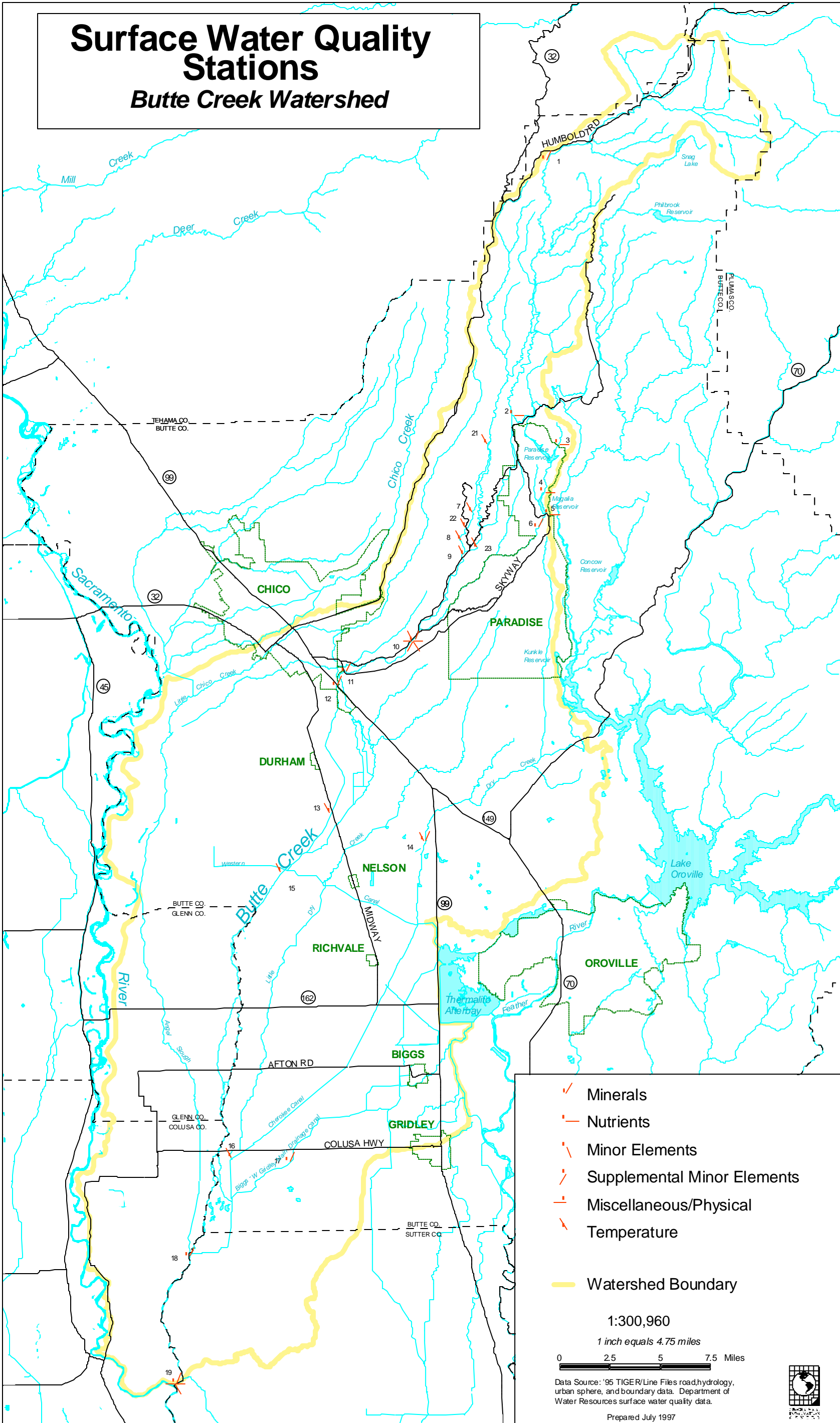
Data Source: '95 TIGER/Line Files road, hydrology, urban sphere, and boundary data. Department of Water Resources surface water quantity data.

Prepared July 1997



Surface Water Quality Stations

Butte Creek Watershed

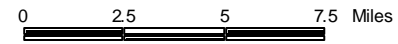


- Minerals
- Nutrients
- Minor Elements
- Supplemental Minor Elements
- Miscellaneous/Physical
- Temperature

Watershed Boundary

1:300,960

1 inch equals 4.75 miles



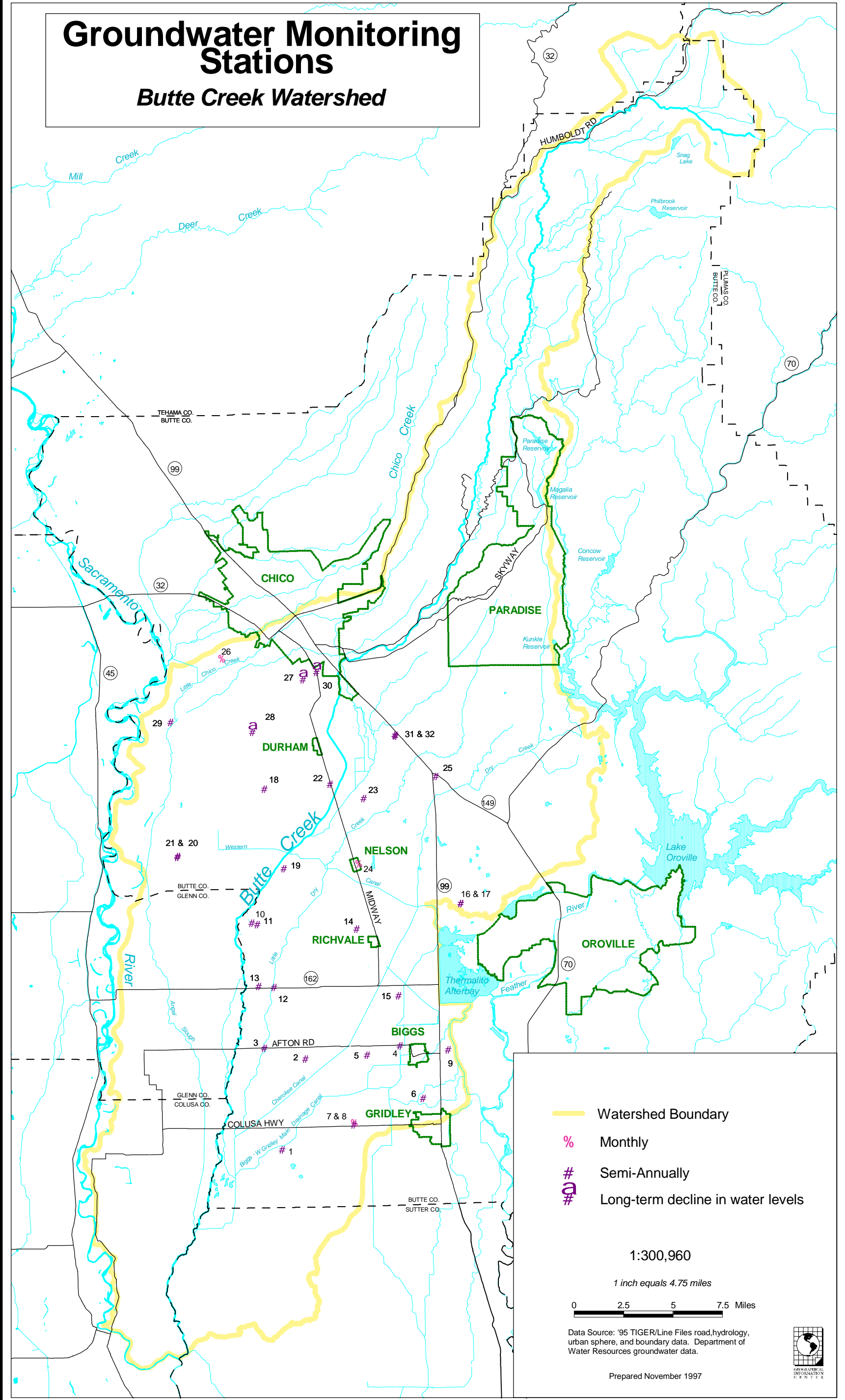
Data Source: '95 TIGER/Line Files road, hydrology, urban sphere, and boundary data. Department of Water Resources surface water quality data.

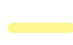



Prepared July 1997



Groundwater Monitoring Stations

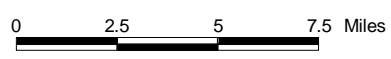
Butte Creek Watershed



-  Watershed Boundary
-  Monthly
-  Semi-Annually
-  Long-term decline in water levels

1:300,960

1 inch equals 4.75 miles



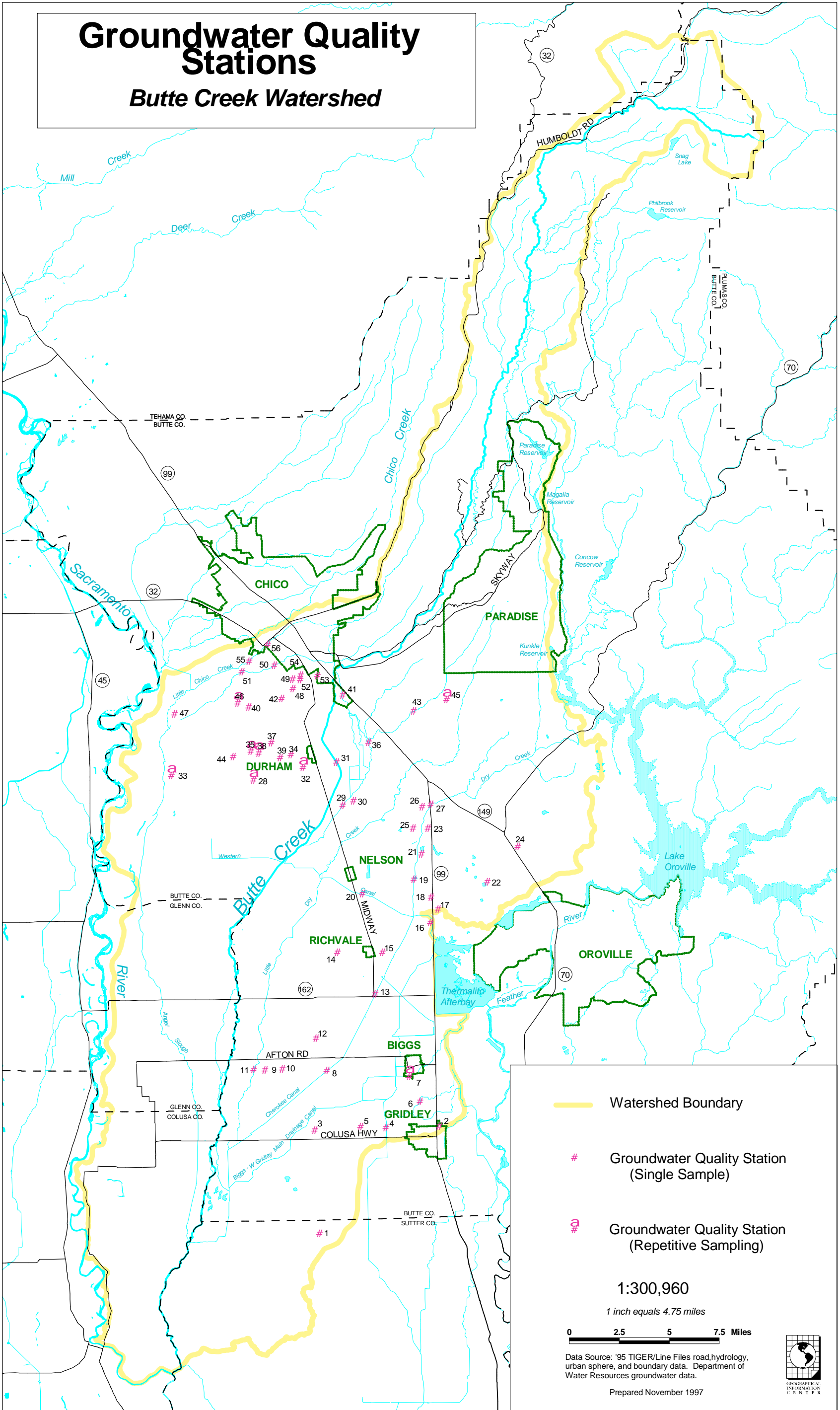
Data Source: '95 TIGER/Line Files road, hydrology, urban sphere, and boundary data. Department of Water Resources groundwater data.

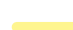


Prepared November 1997



Groundwater Quality Stations

Butte Creek Watershed



-  Watershed Boundary
-  Groundwater Quality Station (Single Sample)
-  Groundwater Quality Station (Repetitive Sampling)

1:300,960
1 inch equals 4.75 miles



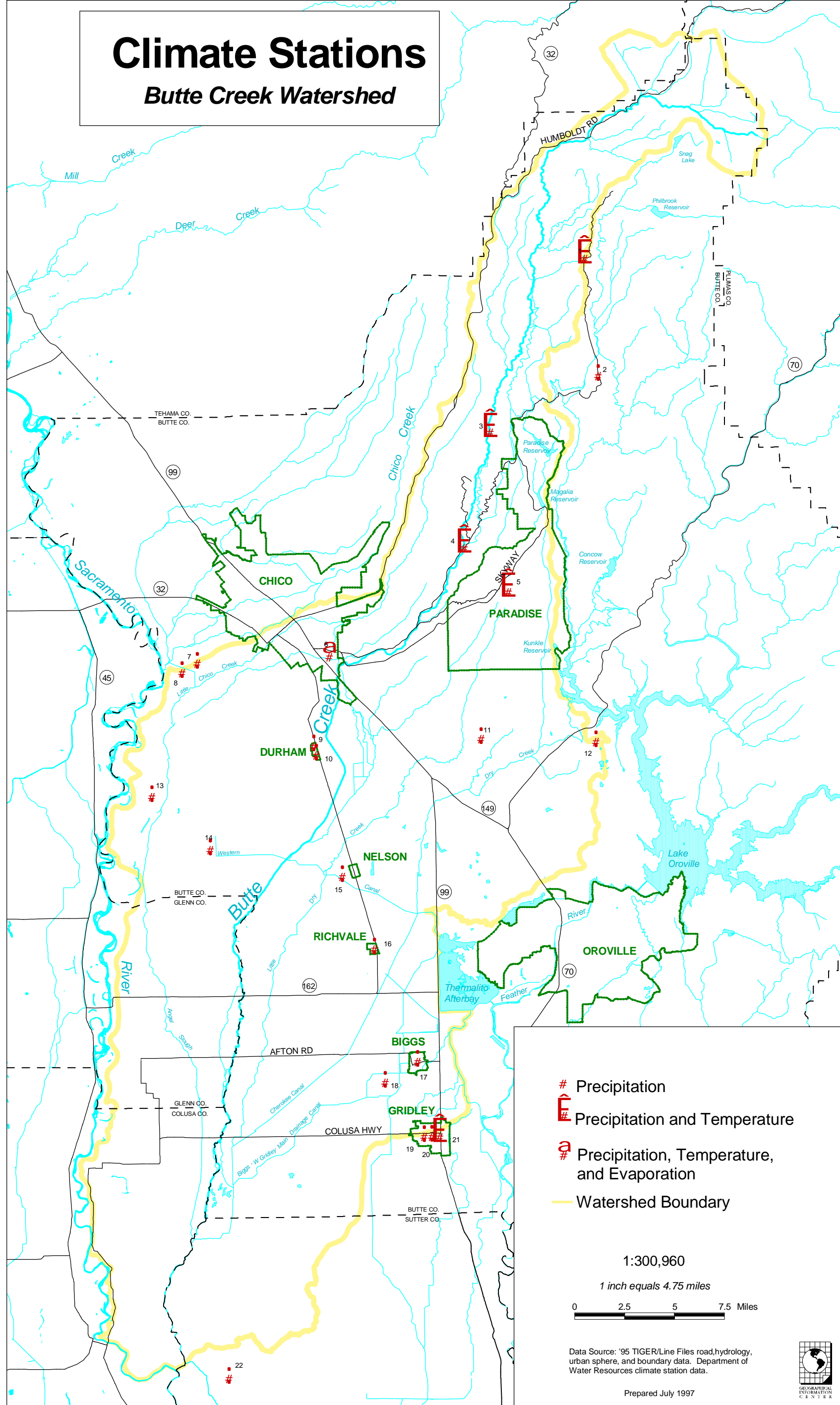
Data Source: '95 TIGER/Line Files road, hydrology, urban sphere, and boundary data. Department of Water Resources groundwater data.

Prepared November 1997



Climate Stations

Butte Creek Watershed



- # Precipitation
- 🏠 Precipitation and Temperature
- 🏠# Precipitation, Temperature, and Evaporation
- Watershed Boundary

1:300,960

1 inch equals 4.75 miles



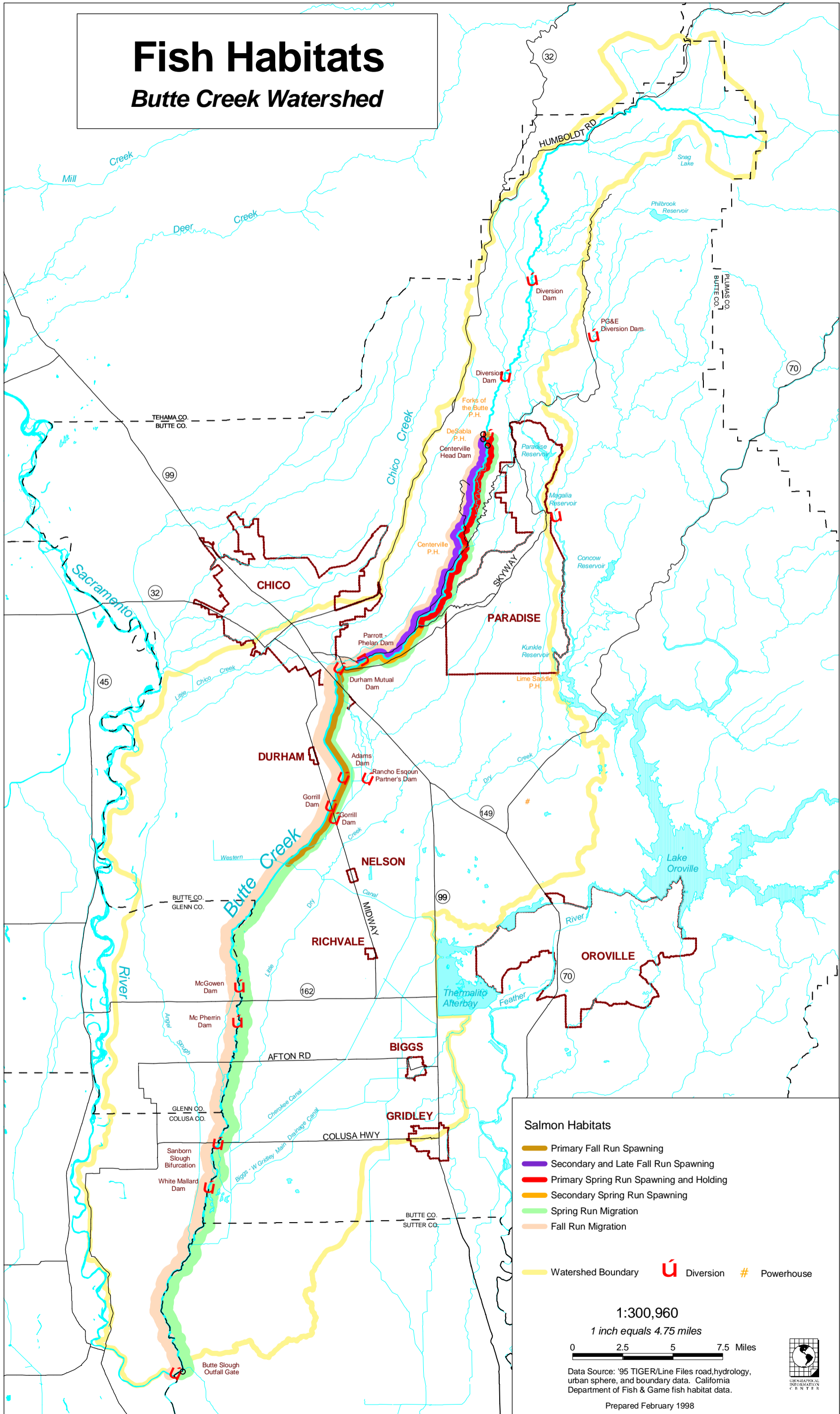
Data Source: '95 TIGER/Line Files road,hydrology, urban sphere, and boundary data. Department of Water Resources climate station data.

Prepared July 1997



Fish Habitats

Butte Creek Watershed



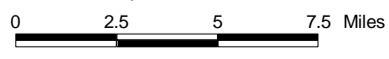
Salmon Habitats

- █ Primary Fall Run Spawning
- █ Secondary and Late Fall Run Spawning
- █ Primary Spring Run Spawning and Holding
- █ Secondary Spring Run Spawning
- █ Spring Run Migration
- █ Fall Run Migration

- █ Watershed Boundary
- U Diversion
- # Powerhouse

1:300,960

1 inch equals 4.75 miles



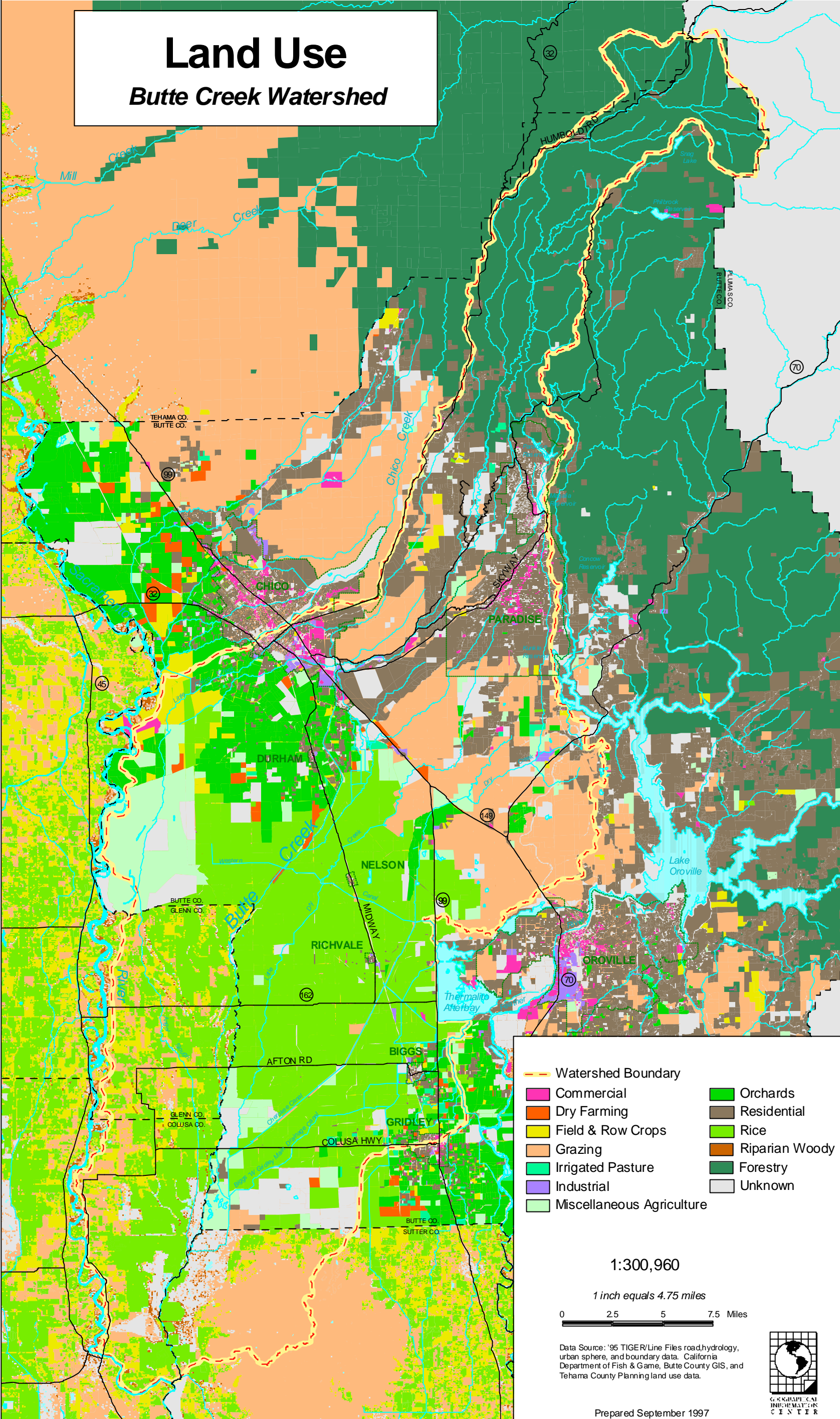
Data Source: '95 TIGER/Line Files road, hydrology, urban sphere, and boundary data. California Department of Fish & Game fish habitat data.

Prepared February 1998



Land Use

Butte Creek Watershed



- Watershed Boundary
- Commercial
- Dry Farming
- Field & Row Crops
- Grazing
- Irrigated Pasture
- Industrial
- Miscellaneous Agriculture
- Orchards
- Residential
- Rice
- Riparian Woody
- Forestry
- Unknown

1:300,960

1 inch equals 4.75 miles

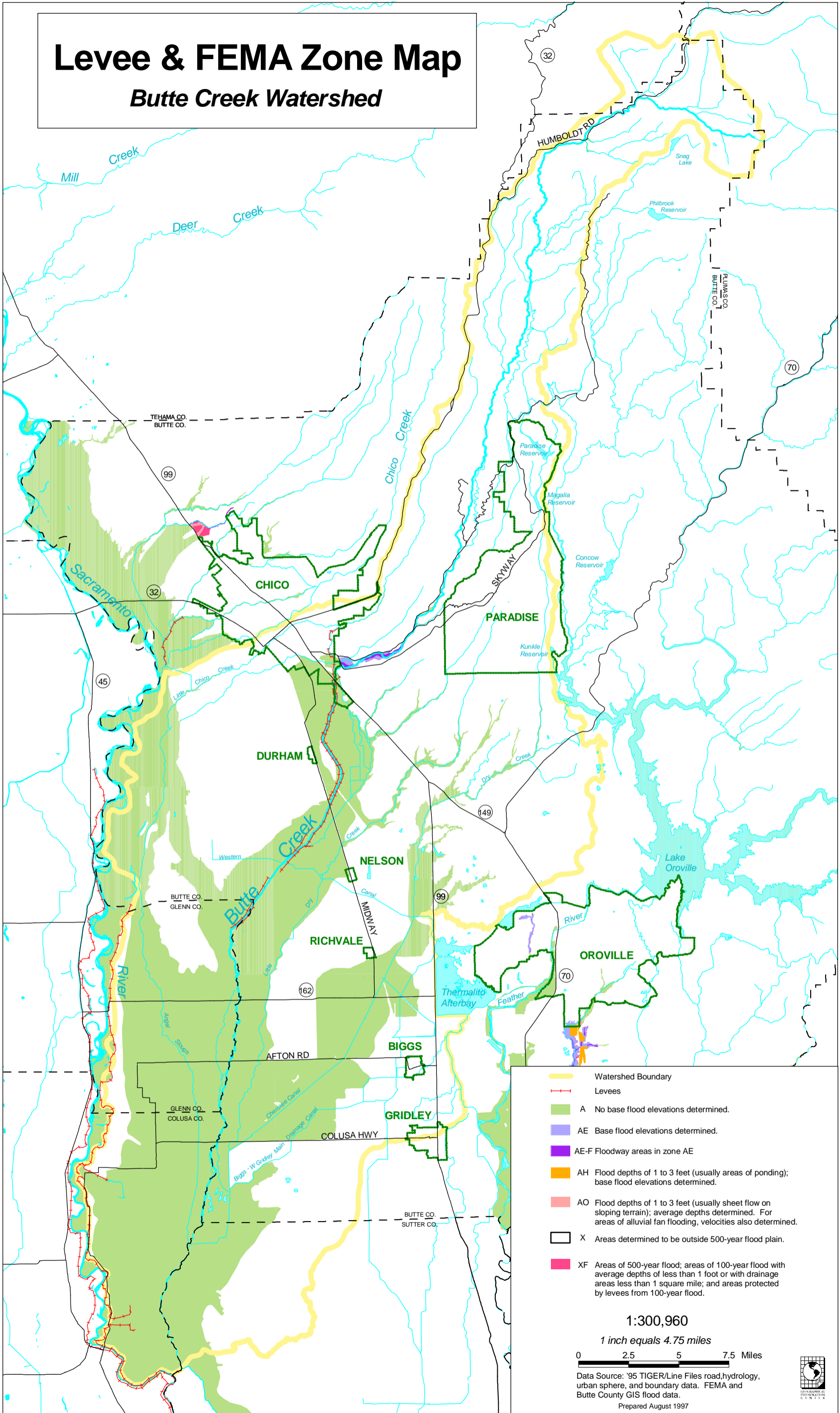
0 2.5 5 7.5 Miles

Data Source: '95 TIGER/Line Files road,hydrology, urban sphere, and boundary data. California Department of Fish & Game, Butte County GIS, and Tehama County Planning land use data.



Levee & FEMA Zone Map

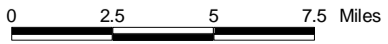
Butte Creek Watershed



- Watershed Boundary
- Levees
- A No base flood elevations determined.
- AE Base flood elevations determined.
- AE-F Floodway areas in zone AE
- AH Flood depths of 1 to 3 feet (usually areas of ponding); base flood elevations determined.
- AO Flood depths of 1 to 3 feet (usually sheet flow on sloping terrain); average depths determined. For areas of alluvial fan flooding, velocities also determined.
- X Areas determined to be outside 500-year flood plain.
- XF Areas of 500-year flood; areas of 100-year flood with average depths of less than 1 foot or with drainage areas less than 1 square mile; and areas protected by levees from 100-year flood.

1:300,960

1 inch equals 4.75 miles



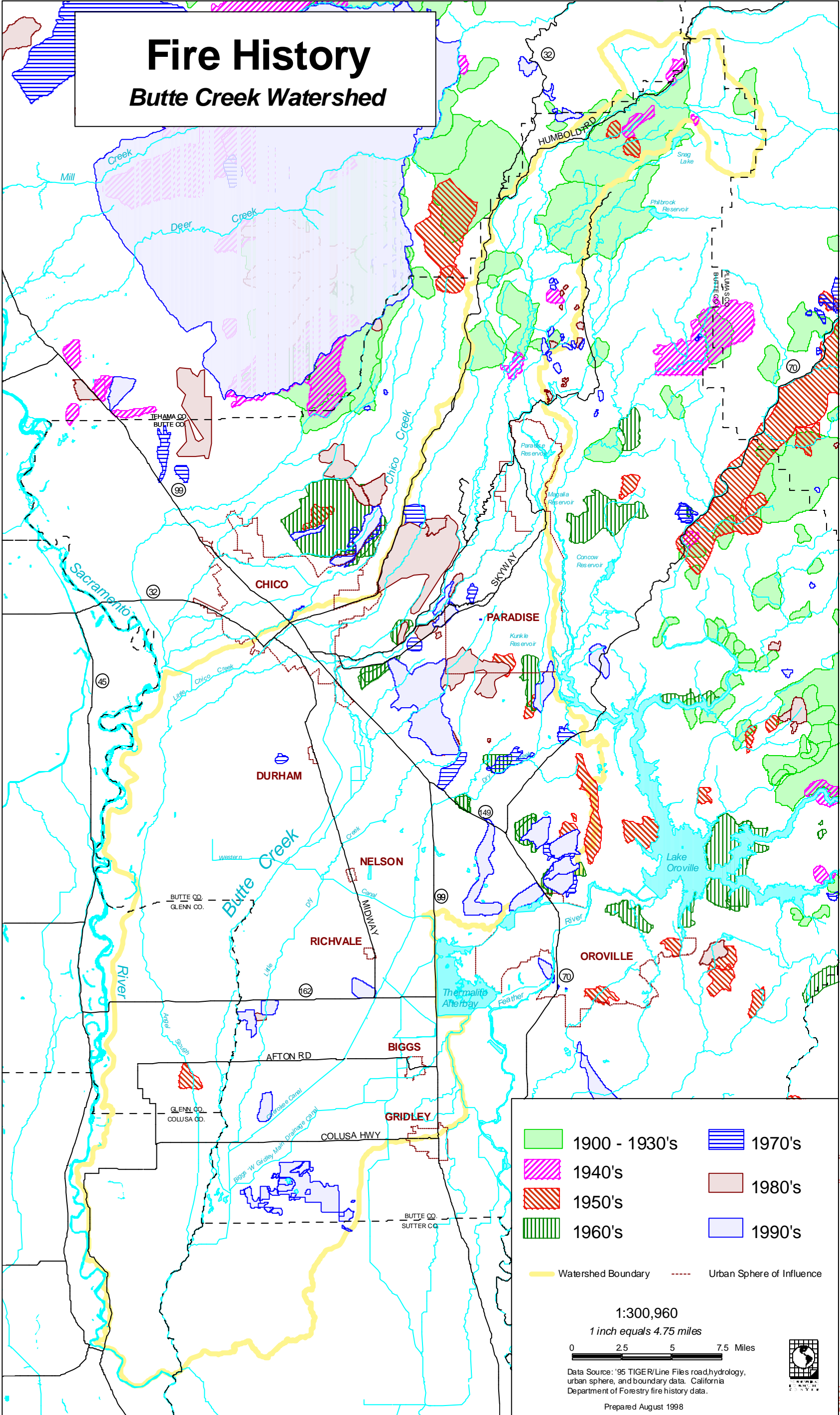
Data Source: '95 TIGER/Line Files road, hydrology, urban sphere, and boundary data. FEMA and Butte County GIS flood data.










Prepared August 1997



Fire History

Butte Creek Watershed



	1900 - 1930's		1970's
	1940's		1980's
	1950's		1990's
	1960's		Watershed Boundary
			Urban Sphere of Influence

1:300,960
 1 inch equals 4.75 miles

0 2.5 5 7.5 Miles

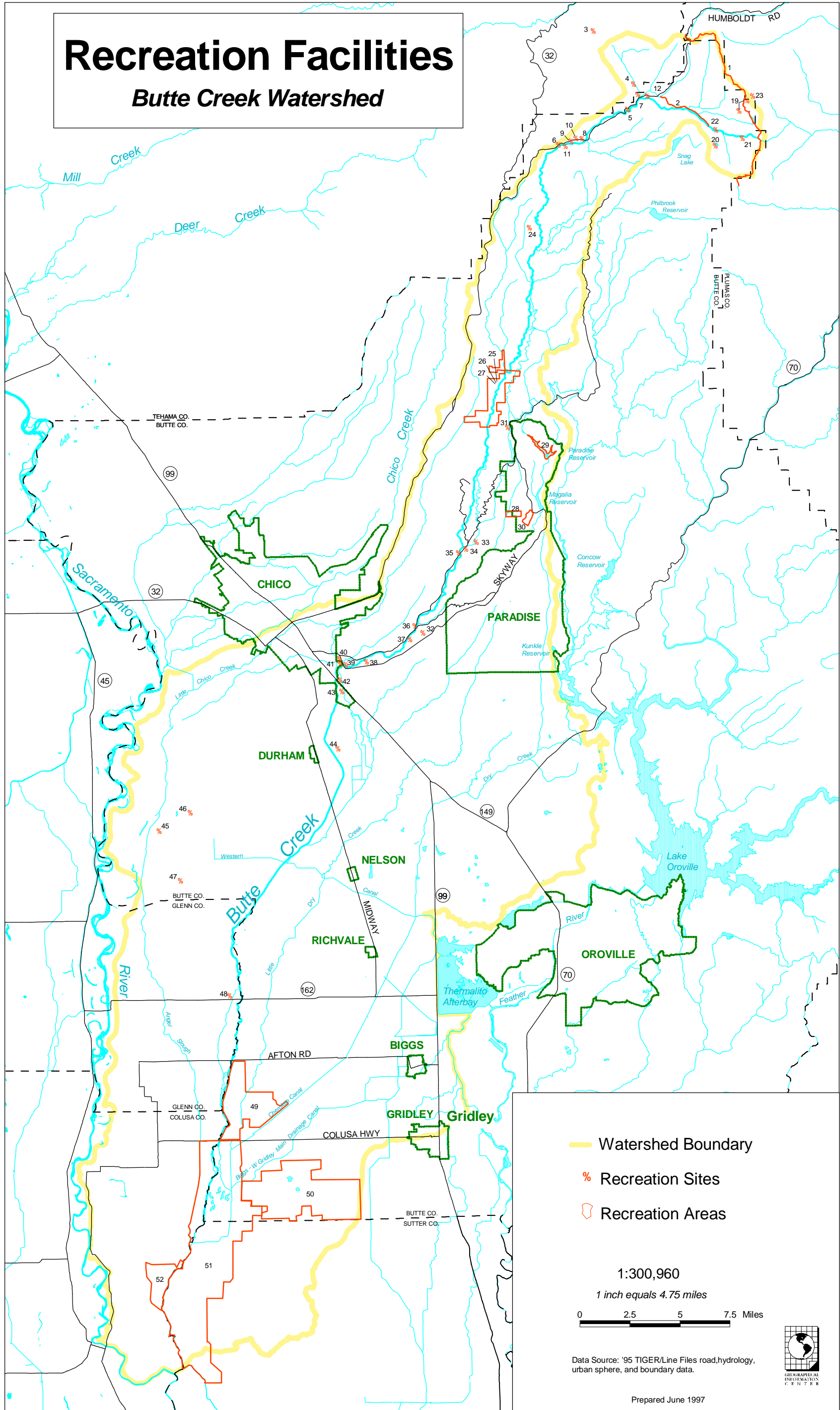
Data Source: '95 TIGER/Line Files road, hydrology, urban sphere, and boundary data. California Department of Forestry fire history data.

Prepared August 1998



Recreation Facilities

Butte Creek Watershed



- Watershed Boundary
- % Recreation Sites
- Recreation Areas

1:300,960
1 inch equals 4.75 miles
0 2.5 5 7.5 Miles

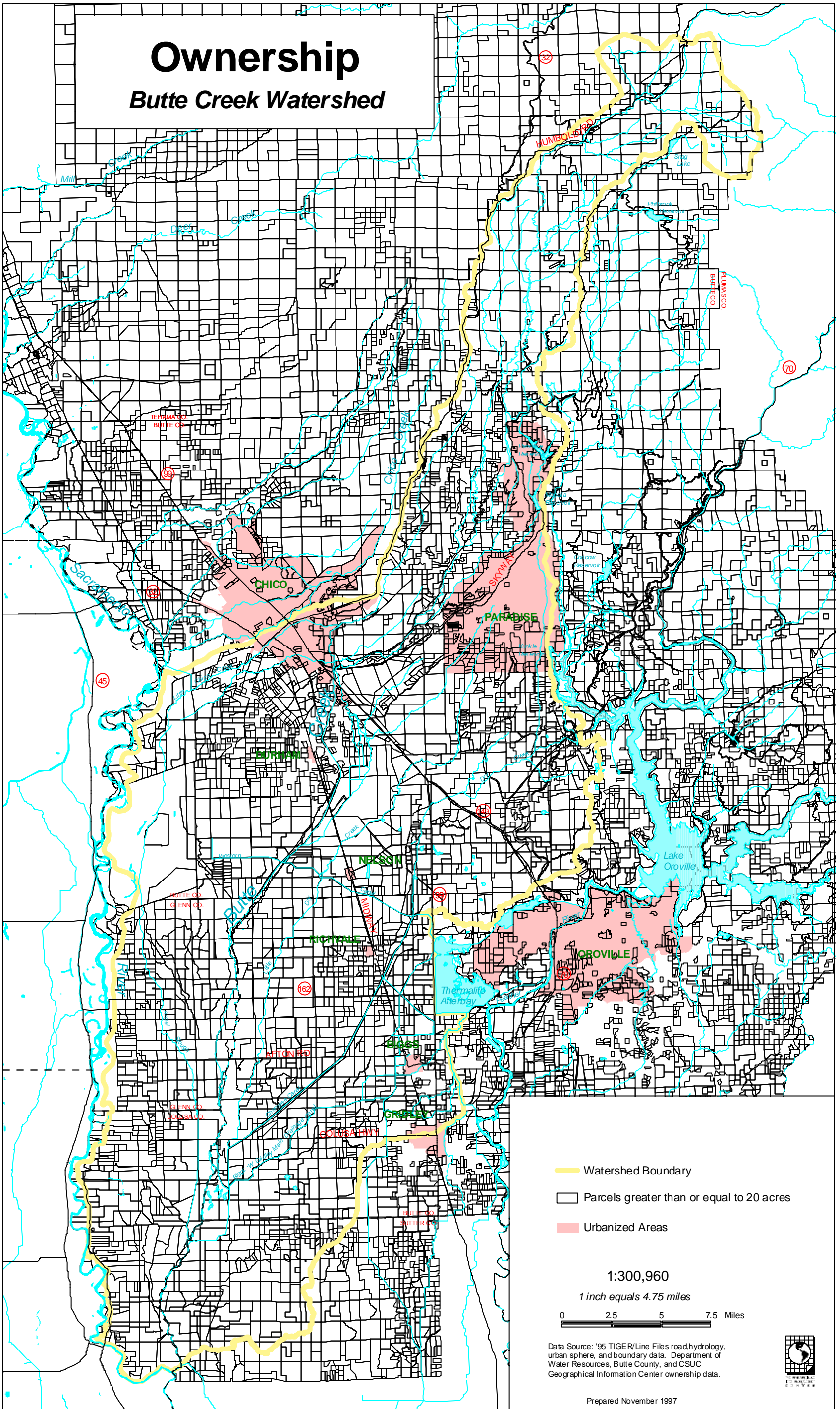
Data Source: '95 TIGER/Line Files road,hydrology, urban sphere, and boundary data.



Prepared June 1997

Ownership

Butte Creek Watershed



- Watershed Boundary
- Parcels greater than or equal to 20 acres
- Urbanized Areas

1:300,960

1 inch equals 4.75 miles

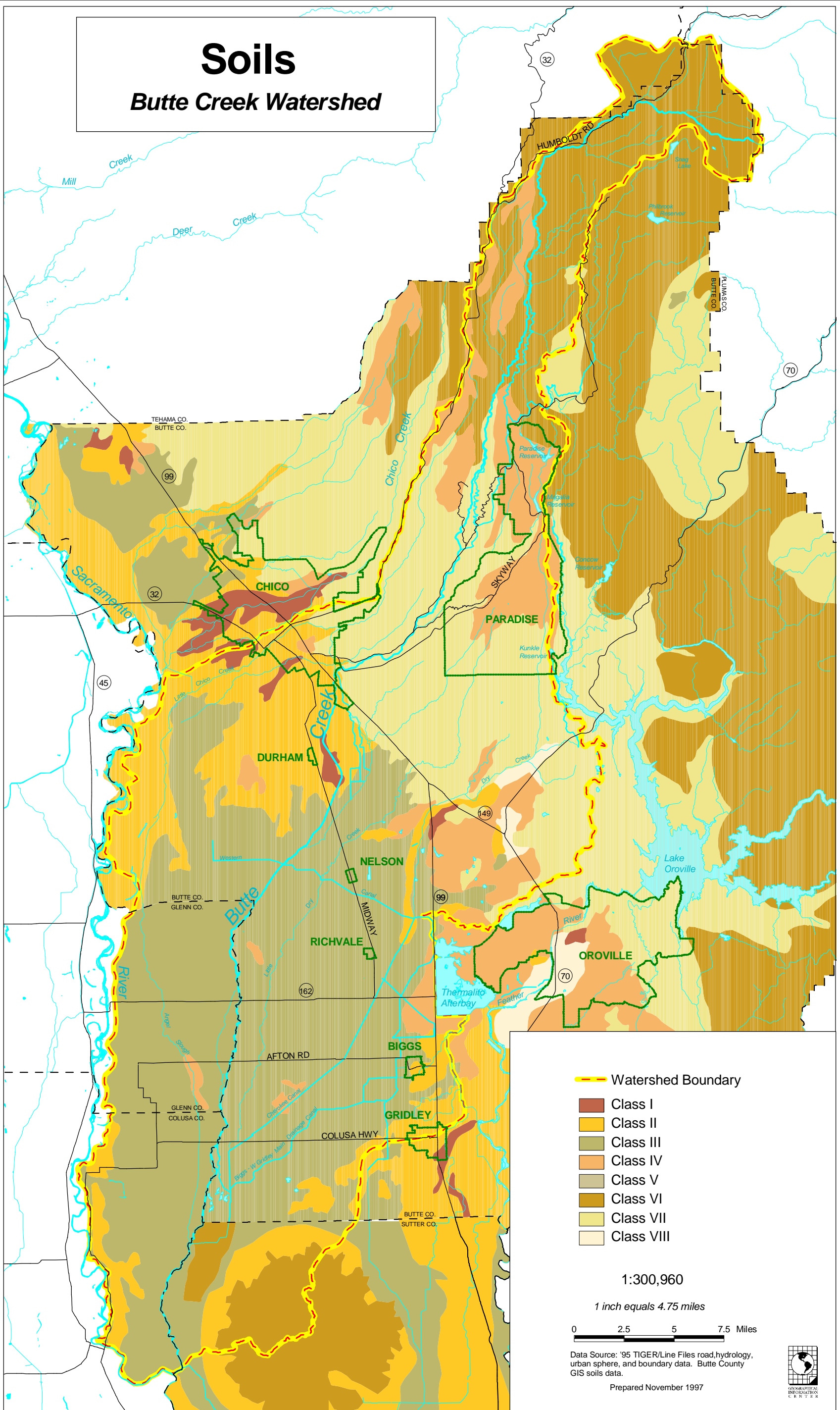


Data Source: '95 TIGER/Line Files road, hydrology, urban sphere, and boundary data. Department of Water Resources, Butte County, and CSUC Geographical Information Center ownership data.



Soils

Butte Creek Watershed



Watershed Boundary

- Class I
- Class II
- Class III
- Class IV
- Class V
- Class VI
- Class VII
- Class VIII

1:300,960

1 inch equals 4.75 miles

0 2.5 5 7.5 Miles

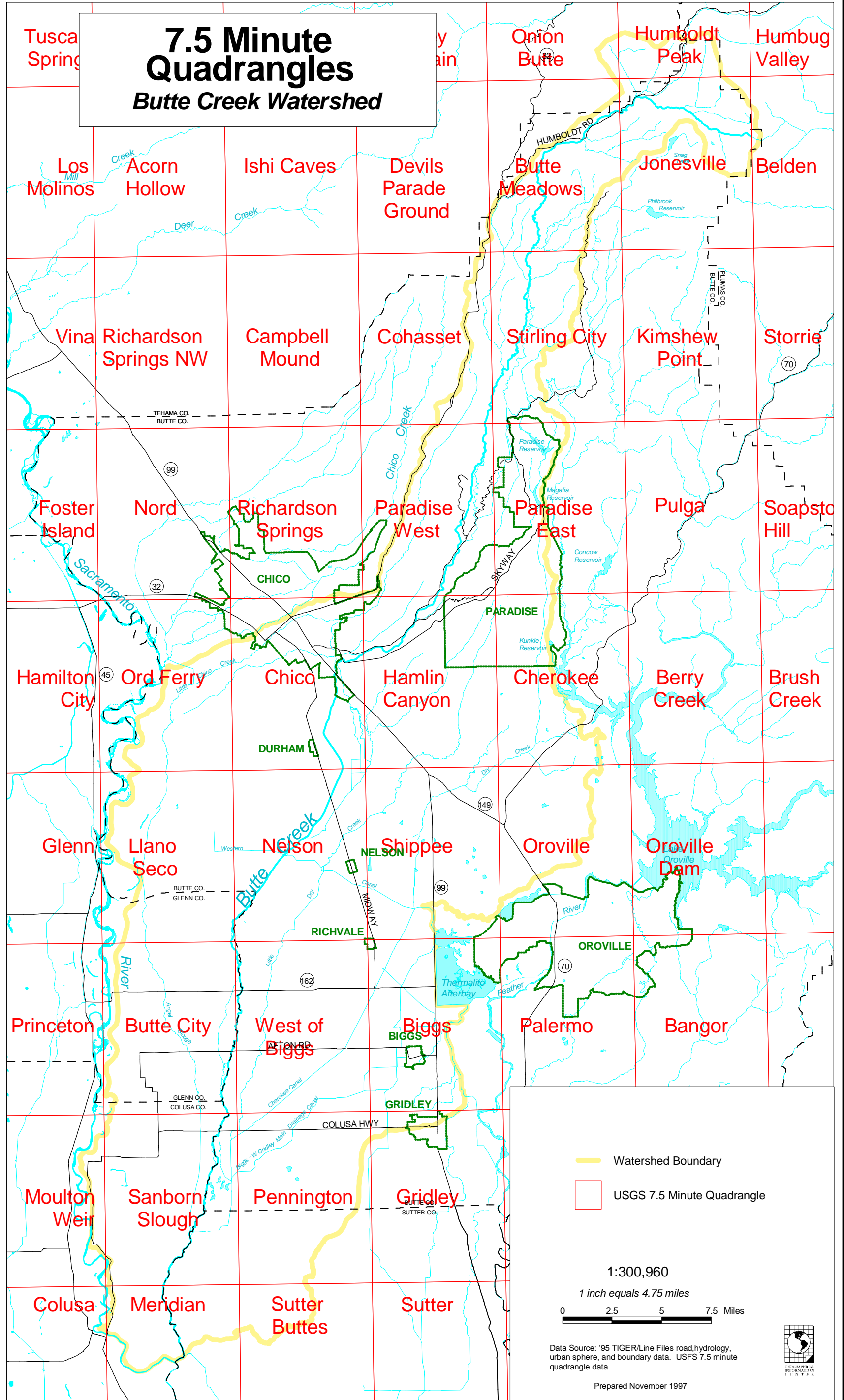
Data Source: '95 TIGER/Line Files road, hydrology, urban sphere, and boundary data. Butte County GIS soils data.

Prepared November 1997



7.5 Minute Quadrangles

Butte Creek Watershed



— Watershed Boundary
 USGS 7.5 Minute Quadrangle

1:300,960
 1 inch equals 4.75 miles
 0 2.5 5 7.5 Miles

Data Source: '95 TIGER/Line Files road, hydrology, urban sphere, and boundary data. USFS 7.5 minute quadrangle data.

Prepared November 1997

